



MESSAGEmanager FAX *on Premise* and *on Demand*

# MESSAGEmanager

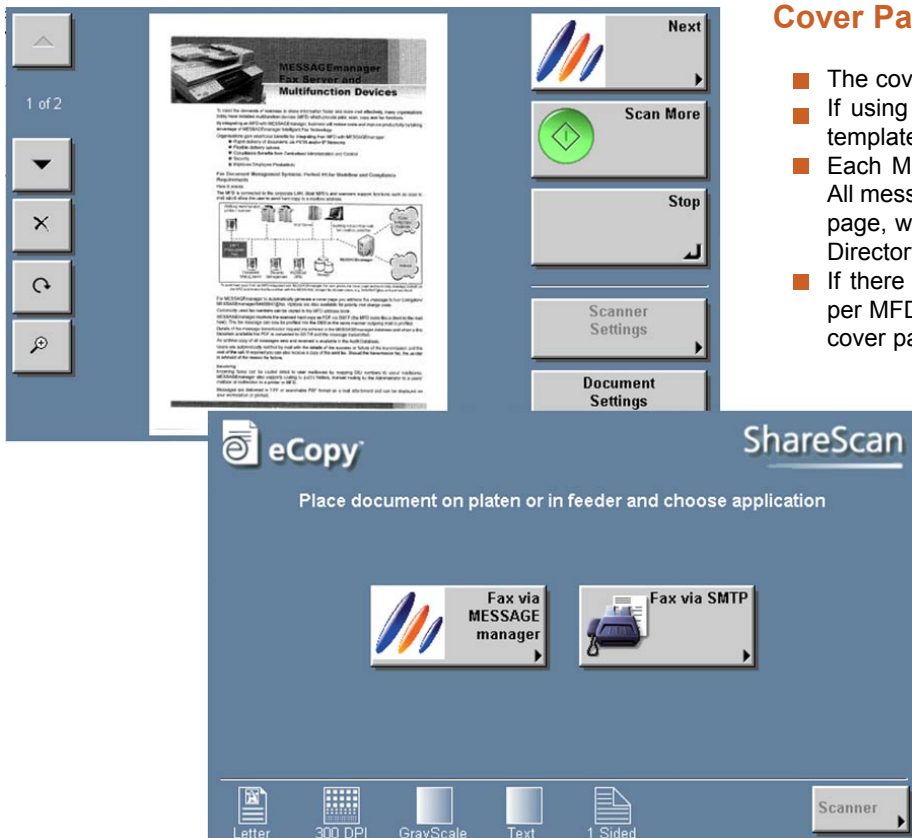
## Canon Fax Connector

*Enables organisations to dramatically reduce their total fax bill by eliminating dedicated FAX lines, modems and boards by consolidating fax transmission and reception over IP and Public Switched networks with MESSAGEmanager FAX Server.*

MESSAGEmanager supports the Canon MFDs via eCopy ShareScan Fax via Email interface.

- eCopy ShareScan Essentials – Document scanning and distribution for workgroup productivity.
- eCopy ShareScan Suite - Enterprise document imaging for business process efficiency.
- eCopy Desktop - Document imaging solution for personal productivity

The MESSAGEmanager SMTP Gateway is required to send messages from eCopy and deliver notifications to the user's inbox.



### Cover Pages

- The cover page to be included in the scanned document.
- If using Active Directory, the user's personal cover page template can be looked up and used for sending.
- Each MFD can be configured with a default cover page. All messages sent from that MFD will have the same cover page, with the sender's information populated from Active Directory, if configured.
- If there is no personal cover page or default cover page per MFD, then the SMTP Gateway will use its own default cover page.

## Benefits

### ■ Rapid delivery of documents via IP or Public Switched Telephone Networks.

MESSAGEmanager FAX software provides high performance fax capability and reliability, with the industry leading T.30 protocol, Error Correction Mode, MMR fax compression plus real-time IP Fax.

### ■ Compliance Benefits from Centralised Administration and Control

IT departments can easily structure how information is accepted, routed, audited, and archived by managing the flow of fax information in an electronic non paper format.

Facsimiles sent and received can be tracked, logged and archived in the MESSAGEmanager SQL database or integrated with Document and Content Management solutions.

Notification of the success or failure of the message is sent to the user.

### ■ Security Benefits

Avoid the risk of exposing sensitive information by immediately sending the fax from the MFD and receiving incoming facsimiles to user's mailbox.

### ■ Increase Productivity and Efficiency

Assigning MESSAGEmanager the responsibility for delivery of fax messages improves Office Productivity by reducing employee dead time waiting at the machine to confirm delivery or the number being retried.

Users are automatically notified of the success or failure of the transmission plus the cost of the call with a copy of the fax sent. Should the transmission fail, you are advised of the reason for failure.

### ■ Reduce Costs

Costs are reduced by the consolidation of phone lines, modems and associated support contracts and supplies.

### ■ User friendly interface

Supports local phone book with recipient details, i.e. fax number, first and last name, which can be used on an auto generated cover page.

Adhoc addressing is supported and can be subsequently added to the phone book, if required.

### ■ Billing codes

Fax Messages can be charged to billing codes for accounting purposes.

### ■ Fax Reports

Reports every outgoing and incoming message with:

- Estimated call cost by user
- Total call duration by user
- Total incoming and outgoing call duration by hour
- Summaries and details of outgoing messages by sender or billing code